

## Devon Audit Partnership – Budget for 2012/13 and 2013/14

### Report of the Head of Devon Audit Partnership

Please note that the following recommendations are subject to confirmation by the Committee before taking effect.

#### Recommendation:

- i) that the Committee notes the proposed budget for the Partnership for 2013/14

#### 1. Background

- 1.1. The Partnership is funded by the three partners in accordance with a formal Partnership Agreement which runs until the end of March 2014. The individual authorities' contributions were originally set based on the budgets and FTEs for each of the three sections prior to the creation of the shared service. In recognition of the current and projected financial constraints on local government generally and the partner councils specifically, the contributions from Partners will in 2013/14 reduce by 10% on the 2012/13 level.
- 1.3. A staff restructuring exercise took place in 2012/13 to ensure that the expected savings can be achieved.

#### 2. Budget 2013/14

- 2.1. The budget for 2013/14 has been prepared based on the understanding that there will be a 10% per year reduction in income from the three partners. Income from schools and external customers has been included based on agreed SLAs and purchasing decisions made by those organisations. This means that the total income from Partners for 2013/14 is expected to be £1,038,900 with a further £385,600 from external partners and clients, including Academies, local authority schools and other local authorities giving a total income stream of £1,424,500.
- 2.2. We have reviewed all our costs to ensure that we can provide an effective, efficient, robust and reliable service from the anticipated income. We will make further investment in ICT, to ensure that data links are fast and reliable. Spending on marketing has been projected to be more than in previous years to reflect the desire to attract new partners and clients.
- 2.3. The budgeted expenditure for the partnership has therefore been set at £1,425,400 for 2013/14 representing a balanced budget.
- 2.4. The proposed budget does not reflect any additional works that DAP may be successful in winning as a result of the increased marketing of the service;

budgets are based on our current agreed plans and service level agreements. The proposed budget for 2013/14 is summarised below:

Devon Audit Partnership	<b>Approved Budget 2013/14 £</b>
Income	(1,424,500)
Employees	1,225,500
Premises	29,600
Supplies and services	140,600
Transport & travel	28,800
	<b>0</b>

2.5 For information, we attach further analysis of the income streams generated for the partnership for the period 2009 to 2015 and projected figures for the coming two years (please see appendix A)

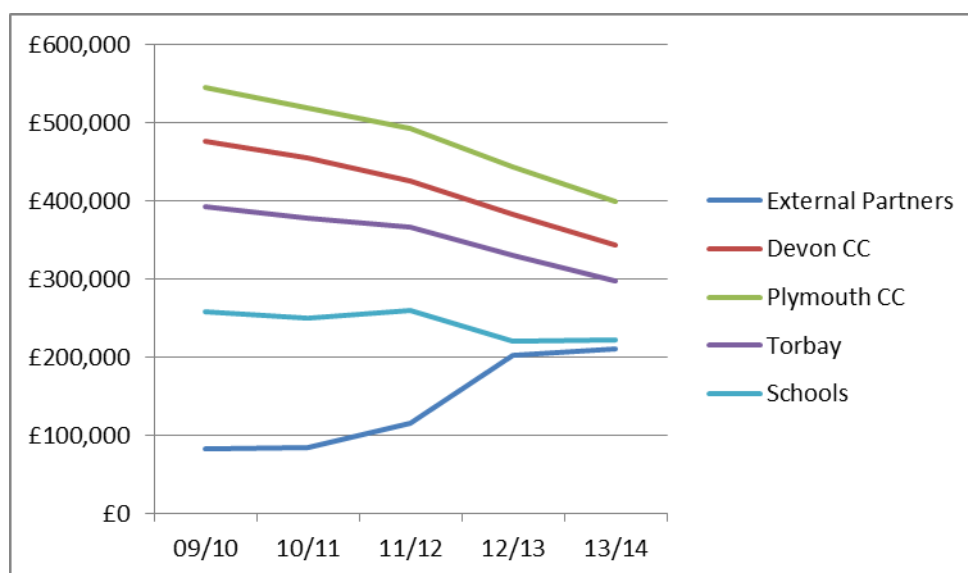
Robert Hutchins  
Head of Devon Audit Partnership

January 2013

## Appendix A

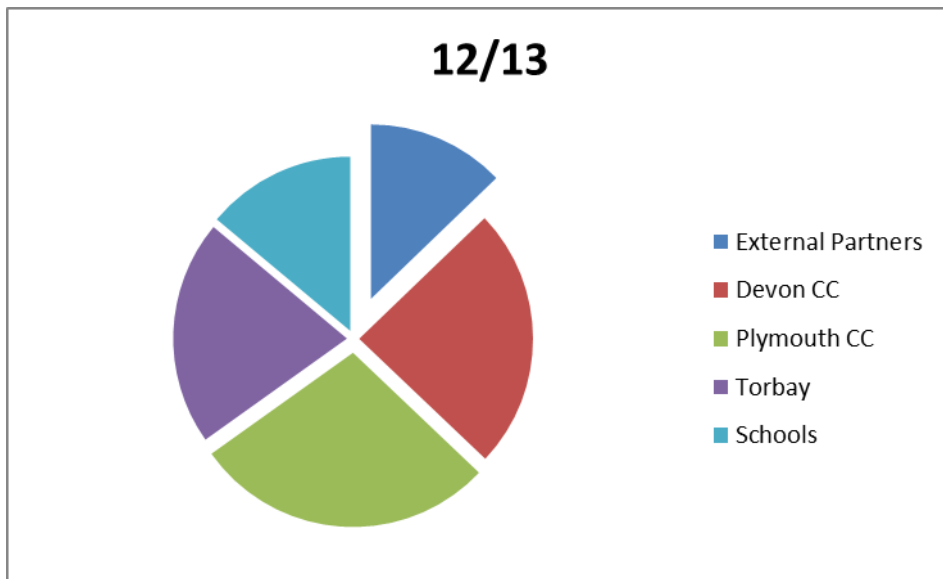
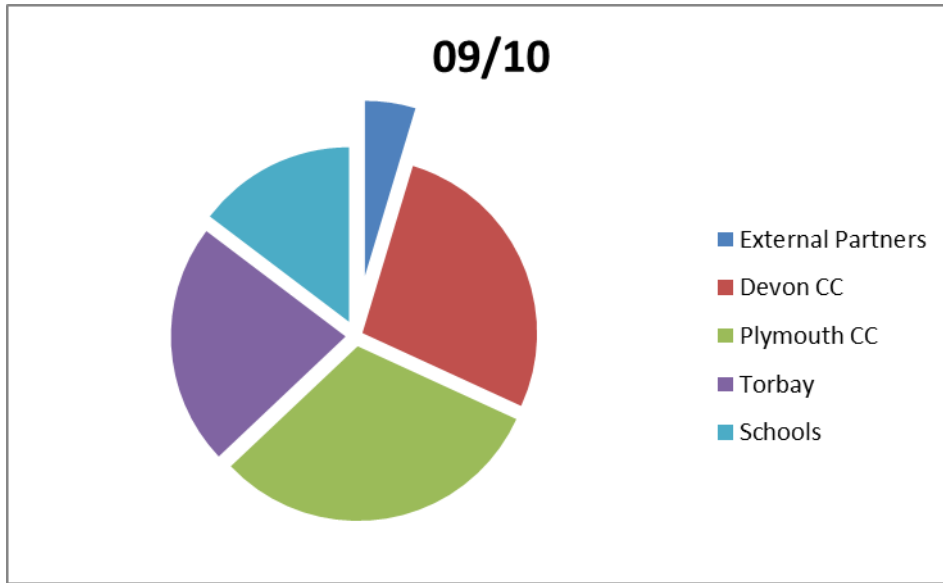
### Analysis of Income from Partners and others over the period 2009 to 2014

	09/10	10/11	11/12	12/13	13/14
External Partners	£81,800	£83,900	£115,500	£202,330	£210,000
Devon CC	£475,500	£454,670	£424,200	£382,600	£343,600
Plymouth CC	£544,113	£518,003	£492,100	£442,900	£398,600
Torbay	£391,500	£377,986	£366,300	£329,700	£296,700
Schools	£256,900	£250,000	£259,157	£220,000	£222,000
Total	£1,749,813	£1,684,559	£1,657,257	£1,577,530	£1,448,465



**Percentage of DAP income from Partners and other organisations**

	09/10		12/13
External Partners	81800	External Partners	202330
Devon CC	475500	Devon CC	382600
Plymouth CC	544113	Plymouth CC	442900
Torbay	391500	Torbay	329700
Schools	256900	Schools	220000



### Current and Projected Income streams 2009 to 2017

	09/10	10/11	11/12	12/13	13/14	14/15	15/16	16/17
External Partners	81,800	83,900	115,500	202,330	210,000	235,000	260,000	290,000
Devon CC	475,500	454,670	424,200	382,600	343,600	325,000	310,000	295,000
Plymouth CC	544,113	518,003	492,100	442,900	398,600	375,000	355,000	335,000
Torbay	391,500	377,986	366,300	329,700	296,700	280,000	265,000	250,000
Schools	256,900	250,000	259,157	220,000	222,000	220,000	210,000	205,555
<b>Total</b>	<b>1,749,813</b>	<b>1,684,559</b>	<b>1,657,257</b>	<b>1,577,530</b>	<b>1,448,465</b>	<b>1,435,000</b>	<b>1,400,000</b>	<b>1,375,555</b>

